



**FORKLIFT AND TELESCOPIC HANDLER ATTACHMENTS CATALOGUE**

**ATTACHMENT**

**CATALOGUE**

We can provide solutions for all your forklift and telescopic handler lifting requirements. No matter in what sector you use your lifting machine in – agriculture, landscaping, mining, construction or industrial – we can deliver a design and fabricate a solution suited to your needs.

We offer a wide and safe range of attachments for all makes of manufacturers to ensure your forklift and telescopic handler is a work horse for all your applications.

Our designs are unique for optimum work performance and can deliver work performance, durability and dependability repeatedly.

We ensure you have the added advantage all the time, every time.

All our lifting attachments are designed and fabricated in accordance with manufacturers and relevant technical standards.

All attachments are supplied with a full client material file with all the required reports and information to ensure it meets all legislated and design requirements.

All attachments should always be used as per the lifting machine manufacturer's instructions and safe modes of operation.

When lifting people with work platforms the occupants must always wear correct fall arrest equipment at all times during operations and be latched onto the platform identified anchor points.

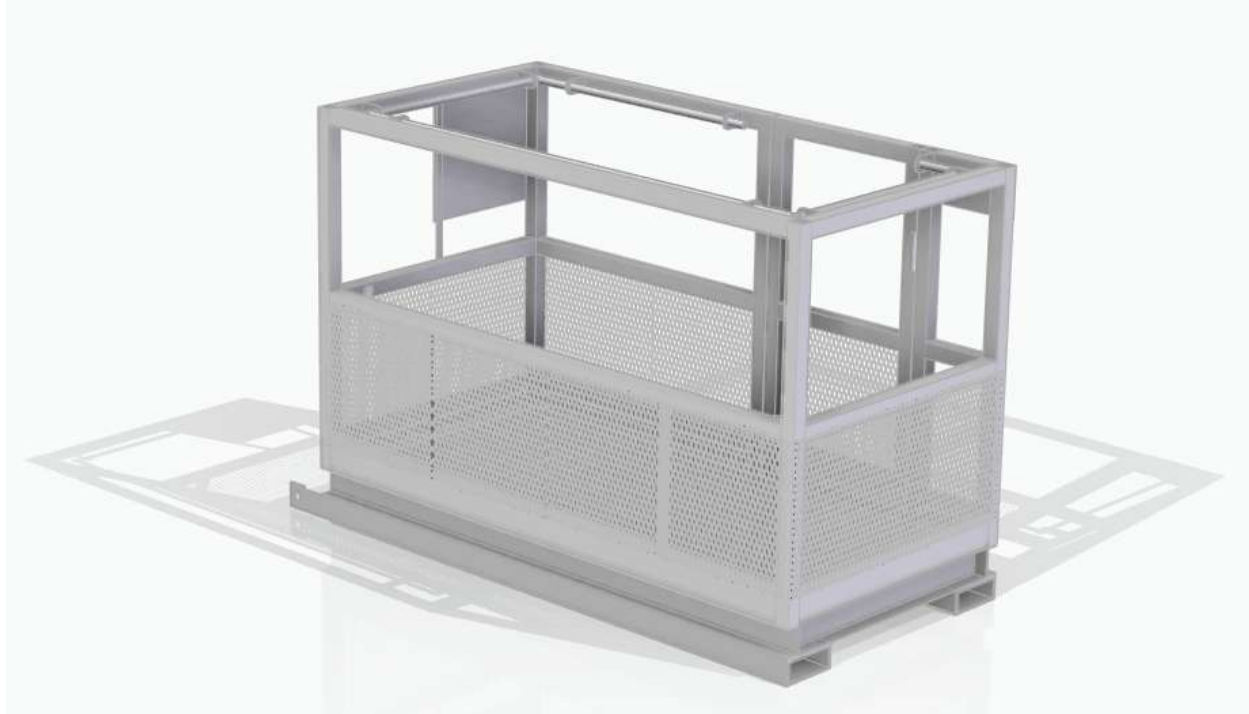
**ONE MAN CAGE – FORK ATTACHED TYPE**



© Copyright J.Kruger

<b>ONE MAN CAGE – FORK ATTACHED TYPE</b>	
<b>DESIGN STANDARD (s) (as applicable)</b>	EN280 / SANS 583 / ISO 16653-1 / ISO 16368 / BS 8620 / BS 7171 / ASME A 120.1/ ASME B30.23
<b>MATERIAL</b>	S355 J0
<b>NO. OF PERSONS</b>	1
<b>CAPACITY</b>	

**TWO MAN CAGE – FORK ATTACHED LONGITUDINAL TYPE**



Copyright J.Kruger

<b>TWO MAN CAGE – FORK ATTACHED TYPE</b>	
<b>DESIGN STANDARD</b>	EN280 / SANS 583 / ISO 16653-1 / ISO 16368 / BS 8620 / BS 7171 / ASME A 120.1/ ASME B30.23
<b>MATERIAL</b>	S355 J0
<b>NO. OF PERSONS</b>	2
<b>CAPACITY</b>	

**LIFTING FRAME WITH HOOK – FORK ATTACHED TYPE**

Copyright J.Kruger



<b>LIFTING FRAME WITH HOOK – FORK ATTACHED TYPE</b>	
<b>DESIGN STANDARD (s) (As applicable)</b>	BS ISO 2330 / BS ISO 13284 / BS EN 1459-5 / ISO 3691-2 / ASME B 56.1
<b>MATERIAL</b>	S355 J0
<b>SWL</b>	1500KG – 12000KG

**NOTE: Attachments can be designed specifically for manufacturer type, model and attachment application.**

**TILTABLE WASTE SKIP – FORK ATTACHED TYPE**

Copyright J.Kruger



<b>TILTABLE WASTE SKIP– FORK ATTACHED TYPE</b>	
<b>DESIGN STANDARD (s) (As applicable)</b>	BS ISO 2330 / BS ISO 13284 / BS EN 1459-5 / ISO 3691-2 / ASME B 56.1
<b>MATERIAL</b>	S355 J0
<b>CAPACITY</b>	1 m <sup>3</sup>
<b>SWL</b>	1000kg

**NOTE: Attachments can be designed specifically for manufacturer type, model and attachment application.**

**TILTABLE SWARF BIN – FORK ATTACHED TYPE**

Copyright J.Kruger

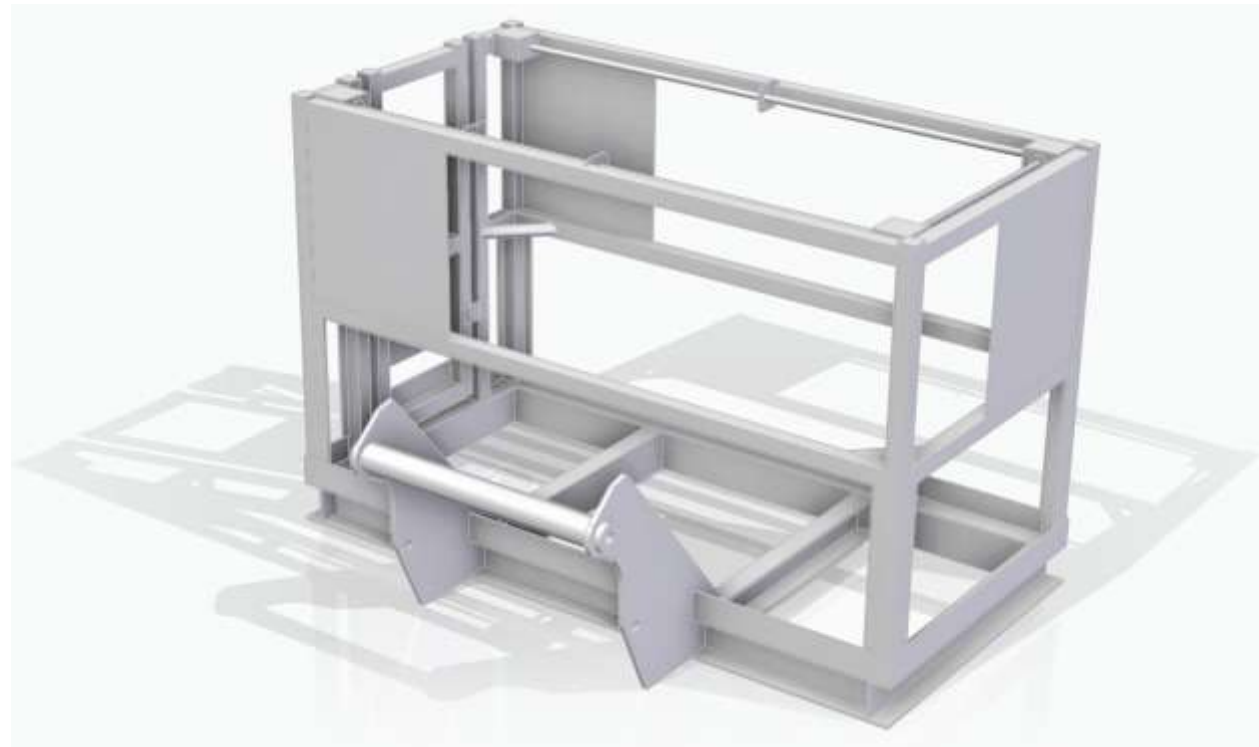


<b>TILTABLE SWARF BIN – FORK ATTACHED TYPE</b>	
<b>DESIGN STANDARD (s) (As applicable)</b>	BS ISO 2330 / BS ISO 13284 / BS EN 1459-5 / ISO 3691-2 / ASME B 56.1
<b>MATERIAL</b>	S355 J0
<b>CAPACITY</b>	1 m <sup>3</sup>
<b>SWL</b>	850kg

**NOTE: Attachments can be designed specifically for manufacturer type, model and attachment application.**

**TWO MAN CAGE – CARRIAGE ATTACHED TYPE**

Copyright J.Kruger



<b>TWO MAN CAGE – CARRIAGE ATTACHED TYPE</b>	
<b>DESIGN STANDARD</b>	EN280 / SANS 583 / ISO 16653-1 / ISO 16368 / BS 8620 / BS 7171 / ASME A 120.1/ ASME B30.23
<b>MATERIAL</b>	S355 J0
<b>NO. OF PERSONS</b>	2
<b>SWL</b>	

**NOTE: Attachments can be designed specifically for manufacturer type, model and attachment application.**



**WIRE MESH CAGE**

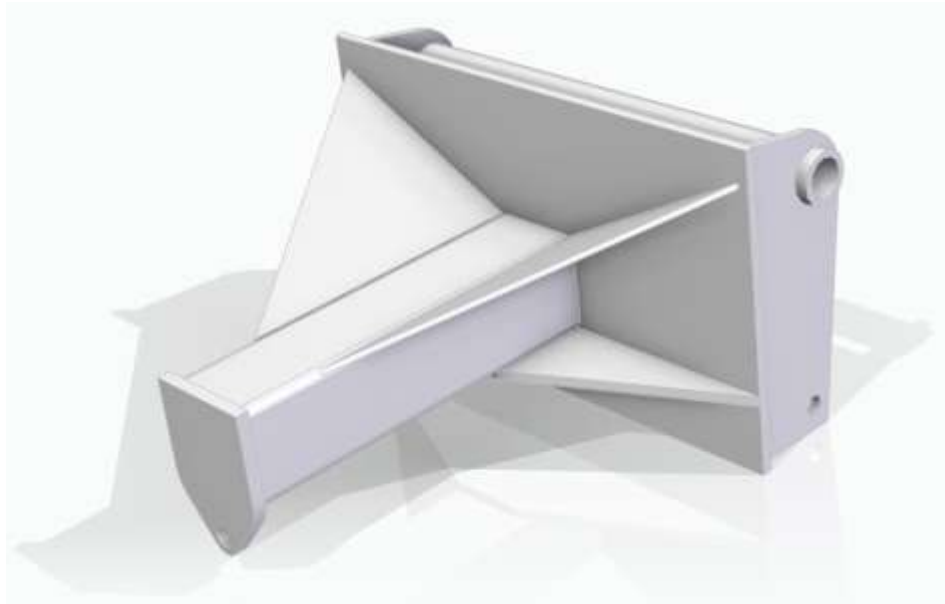


Copyright J.Kruger

<b>WIRE MESH CAGE</b>	
<b>DESIGN STANDARD</b>	
<b>MATERIAL</b>	S355 J0
<b>CAPACITY</b>	
<b>SWL</b>	500kg

**NOTE: Attachments can be designed specifically for manufacturer type, model and attachment application.**

**JIB – CARRIAGE ATTACHED TYPE**



Copyright J.Kruger

<b>JIB - CARRIAGE ATTACHED TYPE</b>	
<b>DESIGN STANDARD (s) (As applicable)</b>	BS ISO 2330 / BS ISO 13284 / BS EN 1459-5 / ISO 3691-2 / ASME B 56.1
<b>MATERIAL</b>	S355 J0
<b>SWL</b>	1500KG TO 18000KG Variants

**NOTE: Attachments can be designed specifically for manufacturer type, model and attachment application.**

**CARRIAGE – TELESCOPIC HANDLER**



Illustration only –varies in design and appearance between model types and manufacturers.

Copyright J.Kruger

<b>CARRIAGE – TELESCOPIC HANDLER</b>	
<b>DESIGN STANDARD (s) (As applicable)</b>	BS ISO 2330 / BS ISO 13284 / BS EN 1459-5 / ISO 3691-2 / ASME B 56.1
<b>MATERIAL</b>	S355 J0
<b>SWL</b>	2500KG TO 25000KG

**NOTE: Attachments can be designed specifically for manufacturer type, model and attachment application.**

**BUCKET – TELESCOPIC HANDLER**

Copyright J.Kruger



Illustration only –varies in design and appearance between model types and manufacturers.

<b>BUCKET – TELESCOPIC HANDLER</b>	
<b>DESIGN STANDARD (s) (As applicable)</b>	BS ISO 2330 / BS ISO 13284 / BS EN 1459-5 / ISO 3691-2 / ASME B 56.1
<b>MATERIAL</b>	S355 J0
<b>CAPACITY ( depends on machine)</b>	1 m <sup>3</sup> up to 2.5 m <sup>3</sup>
<b>SWL</b>	1000kg up to 1500kg

**NOTE: Attachments can be designed specifically for manufacturer type, model and attachment application.**

**FORKLIFT BAG FILLING ATTACHMENT**



Copyright J.Kruger

<b>FORKLIFT BAG FILLING ATTACHMENT</b>	
<b>DESIGN STANDARD (s) (As applicable)</b>	BS ISO 2330 / BS ISO 13284 / BS EN 1459-5 / ISO 3691-2 / ASME B 56.1
<b>MATERIAL</b>	S355 J0
<b>CAPACITY</b>	
<b>SWL ( depends on machine capacity)</b>	1000kg +

**NOTE: Attachments can be designed specifically for manufacturer type, model and attachment application.**

Contact:

Cell: +27 079 994 0566

Mail: [johan@lmtts.co.za](mailto:johan@lmtts.co.za)